

## PROCESS SOLUTION

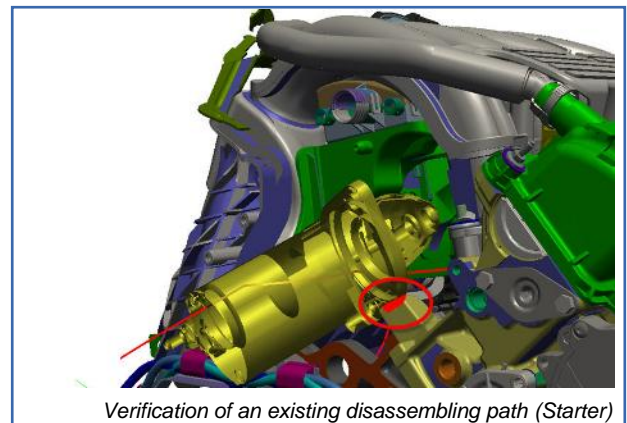
### Pro.PathInspector – Dynamic Geometry Checking

#### Client Requirements

Throughout the course of product development, new models are created practically on a daily basis and are then integrated into the digital prototype. In the case of moving components there will also be a need for dynamic checking in addition to the static analysis. A design engineer wants to be able to check quickly and easily, after a design adjustment, whether his component can still move without collision in its similarly constantly changing environment. It must be ensured that an infringement of a component's field of motion is detected quickly, and that the appropriate measures are taken, irrespective of where this movement has been generated, whether it be in VR or at the testing bench.

#### Teraport Solution

For the dynamic collision calculation of the existing movement of a component, the environment, the path of movement and the moving model are defined with the user interface DMU.Connect. In addition to the status (collision yes/no), the positions at which a collision have been identified and the extent of the collision are also calculated. The collision geometries which have been created serve as a basis for subsequent design adjustments. Pro.PathInspector can also be ideally employed as an extension to the process solution Pro.PathFinder. Collision-free disassembly paths which have already been created can then continuously be checked for freedom of collision in the modified environment.



*Verification of an existing disassembling path (Starter)*

#### Benefit for the Client

The employment of the process solution Pro.PathInspector allows the generated movement of a component to be checked for freedom of collision at the push of a button. Hence a continual overview of the constantly changing geometry and of the required freedom of motion is made possible. The complex processes are checked automatically, simply and quickly. The user receives direct information as to whether or not a design modification is necessary, or whether a new, alternative path has to be calculated.

#### Contact Information

Further details can be found in our comprehensive information material and on our website (<http://www.teraport-engineering.com>). You can also contact us direct at the following address.

**Teraport GmbH**, Aschauer Strasse 32a, 81549 Munich  
Phone: +49 89 651086 700, Fax: +49 89 651086 701  
Mail: [info@teraport-engineering.de](mailto:info@teraport-engineering.de)